



keep it
CURRENT

**OPW 51685 CSO 212 SEWER
SEPARATION PROJECT**

PRECONSTRUCTION PUBLIC MEETING

March 21, 2024



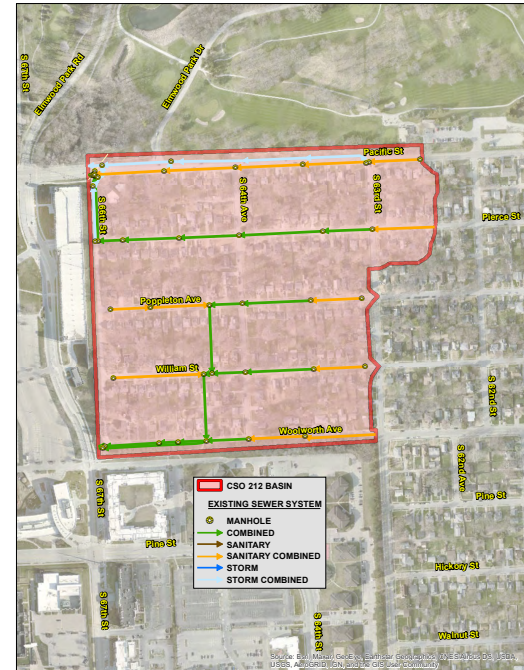
INTRODUCTIONS + PURPOSE

- Introductions
 - City Project Manager, Chris Driscoll, Omaha Public Works
 - 402-444-5220
 - City Construction Project Manager, Patrick Nagle, Omaha Public Works
 - 402-690-5849
 - Presenter, Bob Veenstra, Veenstra & Kimm, Inc.
- Purpose
 - Provide overview of project
 - Review construction schedule
 - Provide contact information



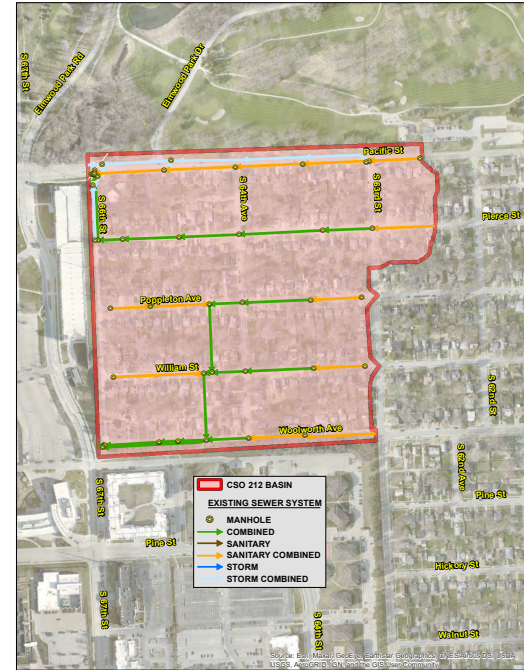
CSO 212 BASIN

- Goals
 - Separate Sewers
 - Re-use existing infrastructure
 - Construct new storm sewer
 - Upgrade existing sewers to be sanitary sewers



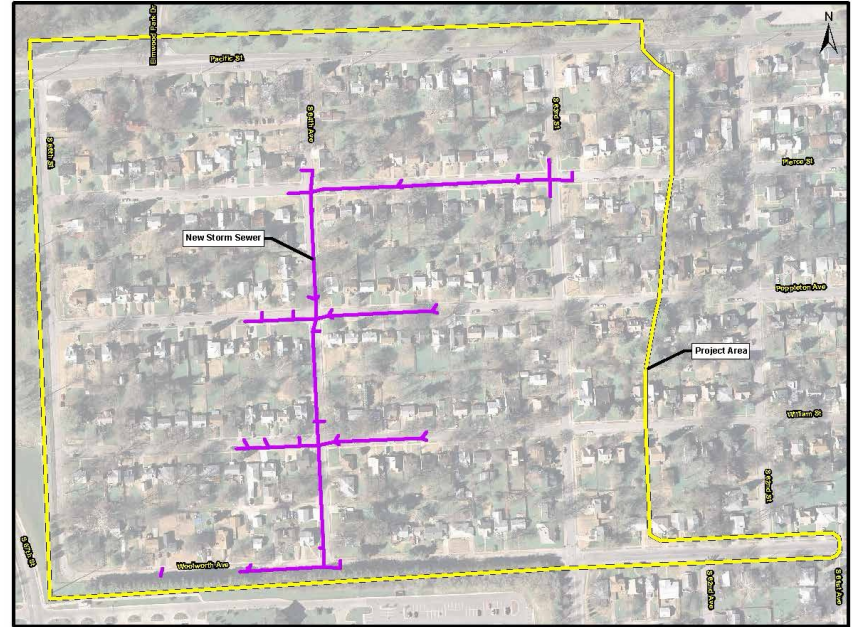
PROJECT DESCRIPTION

- Construction of new storm sewers
- Repair defects in existing sewers
- Line select reaches of existing sewers



STORM SEWER IMPROVEMENTS

- Woolworth Avenue
- S 64th Street
- Pierce Street
- William Street
- Poppleton Avenue



EXISTING SEWER IMPROVEMENTS

- Replace short reaches of existing sewer
- Line select reaches of existing sewer



CONSTRUCTION OVERVIEW

- Remove and replace street
- New storm sewer and inlets
- Remove and replace driveway approaches
- Remove and replace sidewalk
 - Widen to 5'
 - New ADA ramps
- Remove trees between street and sidewalk
- Most work will be in street ROW – limited work in easements on private property
- Most easements will be to replace a short reach of driveway on the property side of the sidewalk



GENERAL CONSTRUCTION PROGRESSION

Surface Removals (Pavement, Sidewalks, Select Trees)



New Sewers



New Pavement and Sidewalks



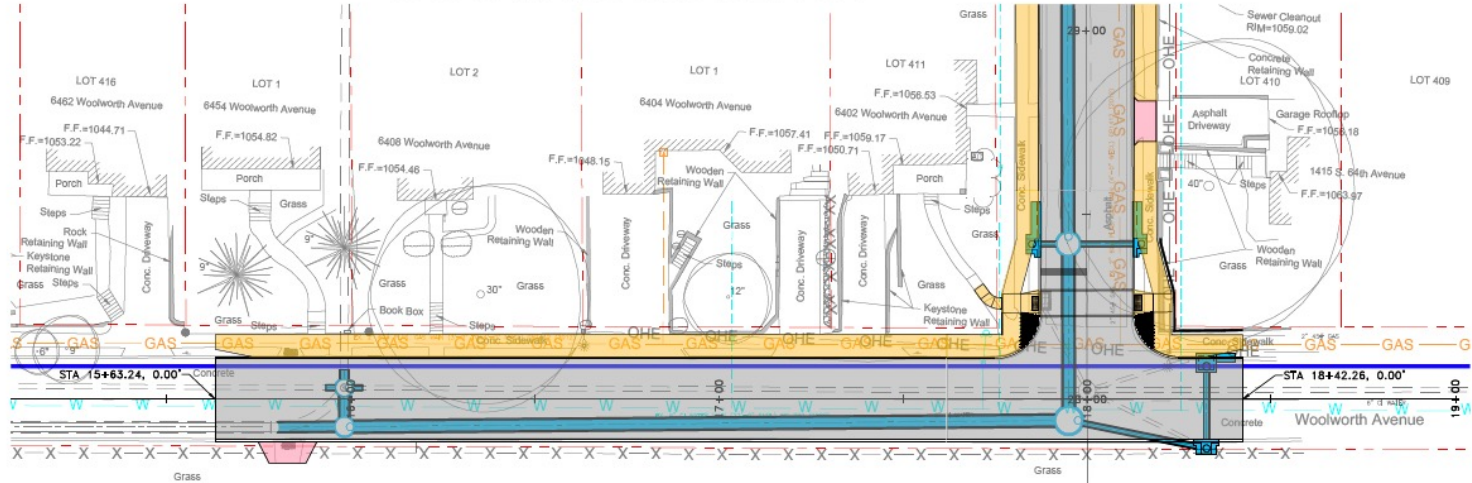
New Sod









CONSTRUCTION PROGRESSION EXAMPLE

WOOLWORTH AVENUE

S. 66TH STREET



S. 64TH AVENUE

LEGEND	
	NEW PAVEMENT
	NEW DRIVEWAY
	NEW SIDEWALK
	DETECTABLE WARNING PANEL
	NEW SOD
	NEW STORM SEWER
	NEW SANITARY SEWER

27+50



CONSTRUCTION PROGRESSION

- Open Trench Construction
 - Conventional Sewer Construction Method
 - Excavation/Pipe Placement/Backfill



CONSTRUCTION PROGRESSION

- Final Restoration Examples

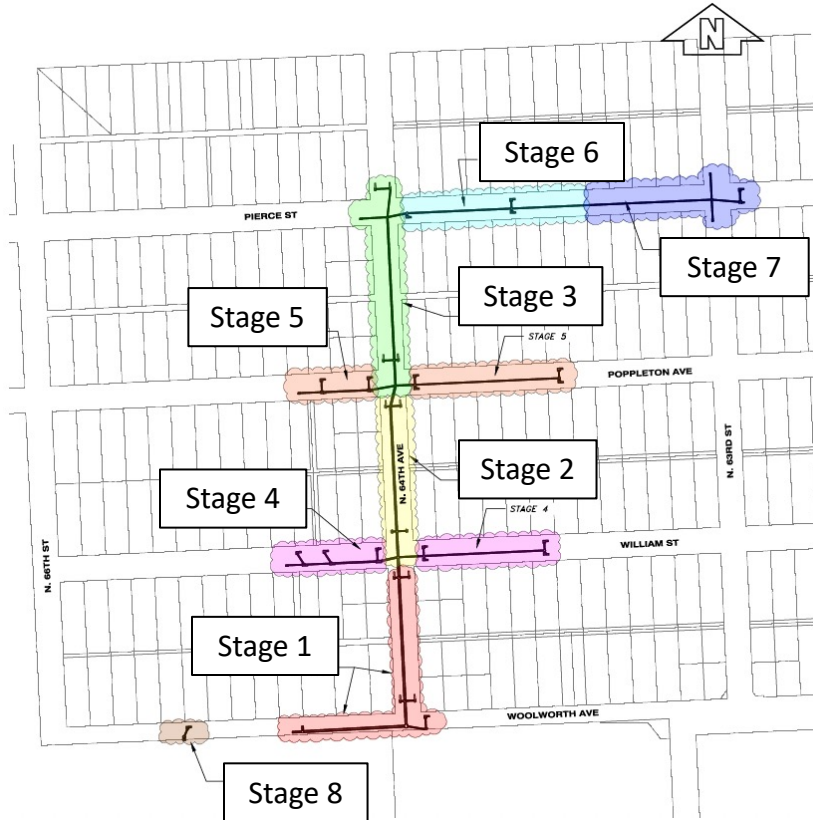


CONSTRUCTION SCHEDULE

- Start as soon as March 25th
- Start on Woolworth west of S 64th Avenue
- Progress north and east
- Construction in stages
- Spot repairs and lining in next few months



CONSTRUCTION STAGING



CONSTRUCTION SCHEDULE OVERVIEW

- Start in late March
- Continue east on Woolworth
- Continue north of S 64th Avenue
- Expect to reach S 64th and Pierce early fall of 2024
- Work to continue east on Pierce
 - Some work on Pierce expected this fall
 - East end of Pierce expected spring of 2025
- Work on William expected this year – late summer to fall
- Work on Poppleton expected this fall or spring of 2025



TRAFFIC ROUTING

- Streets will be closed at storm sewer construction
- Traffic detoured around construction
- No more than two consecutive intersections closed
- Local access provided as much as possible



PROPERTIES ADJACENT TO STORM SEWER

- Street will be closed
- Street and driveway approach will be moved
- Storm sewer installed
- Street and driveway replaced
- Construction to last 6 to 10 weeks
- Periods with no driveway access
- Will need to park adjacent to construction
- Contractor will maintain temporary access as possible
- Arrangements for residents with special requirements



PROPERTIES ADJACENT TO SPOT REPAIR

- Local street closure – 100' or less
- Some driveways will be impacted
- Park on street and walk
- Construction should not exceed two weeks
- Will now occur when storm sewer construction has nearby closures
- Will be notified by contractor



PROPERTIES ADJACENT TO SEWER LINING

- Lining a reach of sewer – generally one day
- No street closures
- Temporary driveway access may be impacted by trucks in street
- Will be notified by contractor 2 to 3 days in advance
- Do not use water during lining process
- Lining temporarily blocks off sewer services
- If you use water, it can fill service line and back up into basement
- Once liner has cured, contractor will open service connector
- As soon as work completed you can use water as normal



TRAFFIC ROUTING

- No detours will be posted
- Local access between closed ahead and construction closure
- If east of construction
 - Access from the east
- If west of construction
 - Use 66th Street
 - Use one of the open streets



PUBLIC PARTICIPATION

- Public Meetings

- Project Specific Updates
- Allows for Your Input



CSO 212 - 60% Design Public Notification (March 2022)



CSO 212 - 90% Design Public Notification (August 24, 2022)



CSO 212 - Pre-Construction Public Meeting (March 21, 2024)



CSO 212 – Public Outreach (On-going)



CONTACTS AND COMMUNICATION

Omaha Public Works

- Construction Project Manager – Patrick Nagle
 - 402-690-5849
 - Patrick.Nagle@cityofomaha.org
- Project Manager – Christine Driscoll
 - 402-444-4966
 - Christine.Driscoll@cityofomaha.org

RDL Utility



COMMENTS OR CONCERNS

- Contact Patrick Nagle
- Send email to “KeepItCurrentOmaha.com”
- Contact City inspector on job site
- Prefer not to contact RDL Utility – City out of the loop



COMMON QUESTIONS

Other Utility Work	<ul style="list-style-type: none">• MUD has a few small utility relocations.• Other utilities have some work that will occur during construction.
Trees	<ul style="list-style-type: none">• The trees to be removed have been removed.• Trees behind sidewalk will not be removed.• Few low hanging branches that extend over the streets will be trimmed.
Sprinkler Lines	Contractor will cap sprinkler lines in the public right of way but will not replace sprinkler lines in public right of way.
Street Elevation	Most will be within 6 inches of existing. A few area the street elevation may change up to 9 inches.
Street Width	The 26-foot streets (all except Woolworth) will be replaced with a 25-foot street to meet City standard.
Sidewalks	The new sidewalks will be 5-foot wide instead of current 4-foot.



COMMON QUESTIONS

Fences and Retaining Walls	<ul style="list-style-type: none">• Any fence or retaining wall that is removed will be replaced.• For some retaining walls contractor will work with property owner to determine if removal can be avoided by minor driveway changes.
Temporary Easements	<ul style="list-style-type: none">• City has obtained required temporary construction easements.• Most easements are to replace a short reach of driveway behind the sidewalk to accommodate minor elevation changes in street and sidewalk.• At corners small temporary easements to allow minor grading as the sidewalk ramps will be located farther back from curb line to meet ADA standards.



COMMON QUESTIONS

What does the project consist of?

- The project involves the construction of a new storm sewer system generally along the corridor of S 64th Avenue from Woolworth Avenue to Pierce Street and east on Pierce Street to 63rd Avenue. The second part of the project involves repairing several defective reaches of sanitary sewer located in the overall project area, but not where the storm sewer is being constructed. The third element of the project involves the lining of reaches of sewer in portions of the project area where new storm sewer is not being constructed.

When will construction start?

- It is anticipated construction will start during the week of March 25, 2024.



COMMON QUESTIONS

How long will construction take place?

- It is anticipated construction will continue through the rest of 2024. Depending on weather conditions and construction progress, portions of the storm sewer construction may be completed in the spring and early summer of 2025.

What contractor is constructing the project?

- The contractor for the project is RPL Utility. RPL Utility will be responsible for construction of all three elements of the project.



COMMON QUESTIONS

Where will construction start?

- Construction is scheduled to start on Woolworth Avenue west of S 64th Avenue.

What is the order of construction?

- The construction of the storm sewer will start on Woolworth Avenue west of S 64th Avenue and extend east to S 64th Avenue. The storm sewer construction will continue north of S 64th Avenue from Woolworth Avenue to Pierce Street and east on Pierce Street to S 64th Avenue. This construction will occur in this order.



COMMON QUESTIONS

Where will construction start?

- Construction is scheduled to start on Woolworth Avenue west of S 64th Avenue.

What is the order of construction?

- The construction of the storm sewer will start on Woolworth Avenue west of S 64th Avenue and extend east to S 64th Avenue. The storm sewer construction will continue north of S 64th Avenue from Woolworth Avenue to Pierce Street and east on Pierce Street to S 64th Avenue. This construction will occur in this order.
- In addition there is storm sewer to be constructed on both William Street and Poppleton Avenue east and west of S 64th Avenue. The construction on William Street and Poppleton Avenue will occur at a later date than the construction on S 64th Avenue near William Street and Poppleton Avenue. When the construction on William Street and Poppleton Avenue will occur will depend on how the progress of construction of the main reach of storm sewer.



COMMON QUESTIONS

When will the spot sewer repairs and lining work take place?

- The contractor is provided flexibility when to complete the spot repairs and lining. The spot repairs will require a closure of the street. The contractor cannot complete the spot repairs at any time when there is construction on the same street that would trap residents between two street closures.
- The lining of a reach of sewer takes place during a single day and does not involve any type of street closure. The contractor can complete the lining work at any time through the project.

How long will the street be closed for storm sewer construction?

- The duration of the closure of the street will depend on many factors, including the depth and size of the storm sewer, weather conditions and other activities of the contractor. For general planning purposes it is anticipated the street in any area will be closed for 6 to 10 weeks from start to finish.



COMMON QUESTIONS

Describe the limitations on street closures.

- The construction of the storm sewer will take place in a series of phases. The construction phasing allows the contractor to close two consecutive intersections. However, the contractor is not allowed to close a third intersection.

What is an example of the street closure phasing?

- In Phase 1 of construction the contractor will be allowed to close both Woolworth Avenue west of S 64th Avenue, the intersection of Woolworth Avenue and S 64th Avenue and S 64th Avenue north of Woolworth Avenue. As Phase 1 progresses the contractor will be allowed to move to Phase 2 that will close the intersection of S 64th Avenue and William Street. The contractor will be allowed to have both the intersections of S 64th Avenue and Woolworth Avenue and William Street closed at the same time.
- Before the contractor can close the intersection of S 64th Avenue and Poppleton Avenue the contractor will need to open the intersection of S 64th Avenue and William Street. The same concept will continue throughout the project.



COMMON QUESTIONS

Will the contractor be able to work on all of Pierce Street between S 64th Avenue and S 63rd Street at the same time?

- No, the contractor is required to sequence the construction on Pierce Street to limit the amount of Pierce Street that is closed at any one time.

What is the impact if my house is located adjacent to a spot repair?

- When the contractor completes a spot repair there will be a limited area where the street will be closed. The closure will be less than 100 feet in length and will generally affect a few driveways. When the street is closed for a spot repair you will need to park on the street as close as possible to the road closure and walk to your residence. The City will work with the contractor to minimize both the number of driveways impacted by the spot repairs and the duration of any closure.

If my driveway is in the area of storm sewer construction what is the impact?

- When storm sewer construction is occurring in an area there will be periods of time when access to your driveway will not be available. During these periods it will be necessary to park at the closest location and walk to your residence. There will be driveway closures while the storm sewer is being constructed adjacent to your property and when the paving of the street occurs. There may be gaps in the construction sequence. When there are gaps in the construction sequence the City will require the contractor to provide as much access to your driveway as possible even though it may be a temporary access.



COMMON QUESTIONS

What happens if my house is adjacent to a reach of sewer to be lined?

- When the contractor is lining a reach of sewer it will have trucks parked in the street. The trucks may result in a temporary inability to reach your driveway, but for no more than a few hours while the actual reach of lining takes place.
- If your house sewer connects to a reach of sewer that will be lined the contractor will provide you a notice a day or two in advance of when the lining will occur. During the lining process you are requested not to use any water. When the lining occurs there is a continuous liner in the pipe installed in the sewer. This liner blocks your sewer service. Any water you use will be trapped in your sewer service. If you use too much water it is possible water can backup into your basement. This period of no water usage will last a few hours. Once the contractor installs the liner and it has cured, the contractor will cut out a small piece of the liner at your sewer service to fully restore your sewer service. During the lining process there will be no impact on your sewer service. The only impact will be if you use too much water it may backup into your basement until the contractor cuts open the service line. To fully line the sewer the contractor cannot avoid this temporary blockage of your sewer service.



COMMON QUESTIONS

What if I live in the project area but not where the construction is actually taking place?

- For residents in the vicinity of the project, but not where construction occurs, the impact will be street closures. Residents who live east of S 64th Avenue will generally need to travel easterly.
- For residents who live on Woolworth Avenue, William Street, Poppleton Avenue and Pierce Street west of S 64th Avenue when your intersection with S 64th Avenue is closed you will need to access your property from the west using S 66th Street. It is recognized S 66th Street is not the best street. However, with the existing street configuration you will need to use S 66th Avenue. The City is limiting the closure to no more than two consecutive intersections in order to minimize the length of S 66th Street that you will need to travel.

If I have a question or a problem during construction who do I contact?

- The project manager for the City during the construction of the project is Patrick Nagle. Patrick can be contacted by telephone at 402-690-5849 or by email at Patrick.Nagle@cityofomaha.org.
- The City will also have staff members onsite daily inspecting the project. You may talk to one of the City staff members while they are present on the project site.
- During construction of the project you may interact with representatives of RPL Utility. If you feel comfortable discussing questions and concerns with RPL Utility you may do so. However, the City would encourage you to work through City representatives so they are aware of any concerns or questions that arise during construction of the project.



COMMON QUESTIONS

I noticed the information for the project now references Keep It Current. How does that relate to prior information that referenced CSO?

- The City has completed a significant portion of its combined sewer improvements and determined it would be more efficient to scale back the level of involvement of the former CSO consultants. The City is taking over the program for efficiency and cost saving purposes. It seemed like an opportunity to rebrand the program and Keep It Current is the City's more streamlined program similar.

What if I have or know someone who has limitations on mobility?

- If you have mobility issues or are aware of a property owner with mobility issues, please privately discuss that with one of the City representatives or call Patrick Nagle. The City will work with affected property owners and RPL Utility to minimize the inconvenience and to provide special arrangements as necessary for persons with mobility limitations. While it may not be possible to eliminate all inconvenience, the City will make its best efforts to do so.



COMMON QUESTIONS

If my house is adjacent to the storm sewer construction will there be construction on my property?

- To the extent possible the City is limiting work to within the public right-of-way. If there are areas where construction must occur on private property the City has obtained the necessary right-of-way and easements for construction.
- Property owners are reminded that in many areas along the project the public
- right-of-way line is several feet behind the sidewalk. There are a number of areas where there will be construction on the house side of the sidewalk, but that work will be within the street right-of-way.

What if my house has a retaining wall either along the sidewalk or along the driveway?

- To the extent possible the design avoids impacting existing retaining walls along the sidewalk or along the driveways. There are a few areas where a retaining wall will need to be removed in order to construct the sidewalk. There are a few areas where the new driveway approach will extend on the house side of the end of the retaining walls. Whenever possible the driveway will be constructed without impacting the retaining walls.



COMMON QUESTIONS

If my house is near the storm sewer construction will my utility service be impacted?

- The plan is to not impact any of the water, electric, gas, telephone or internet service to properties along the project. The City would note in some areas the exact location of underground utility services are not known and there is always a possibility the contractor will inadvertently damage a property owners service line. If a service line is damaged the contractor must work with the utility company to restore service as quickly as possible.





keep it
CURRENT

THANK YOU FOR YOUR TIME

